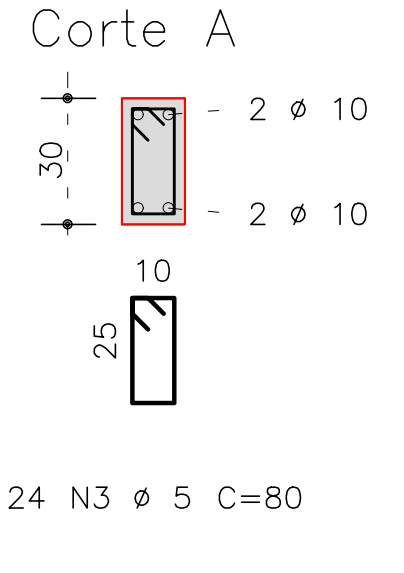
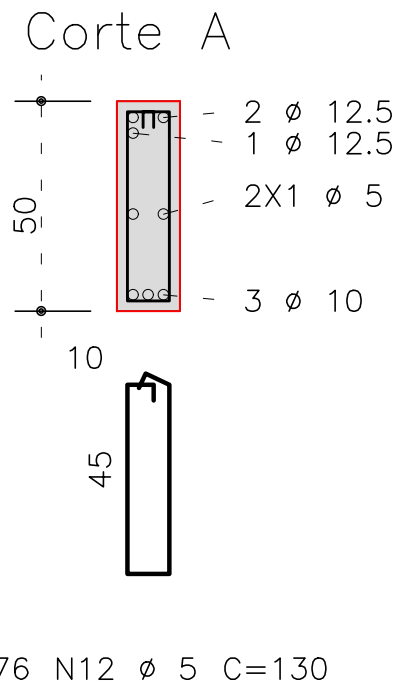
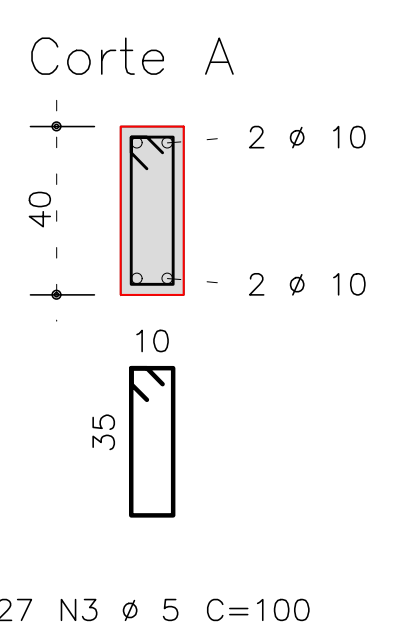
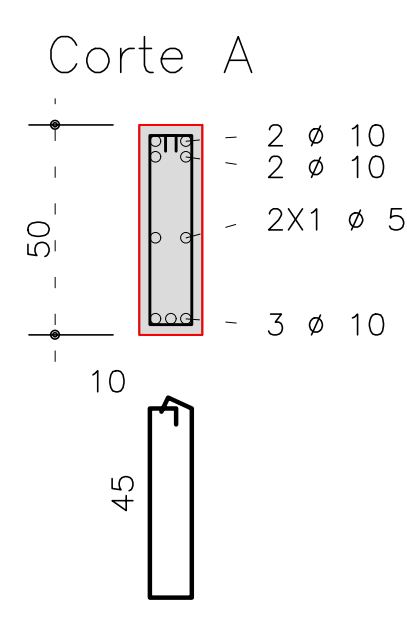
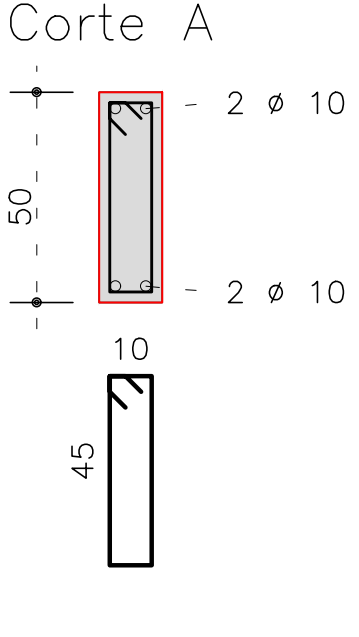
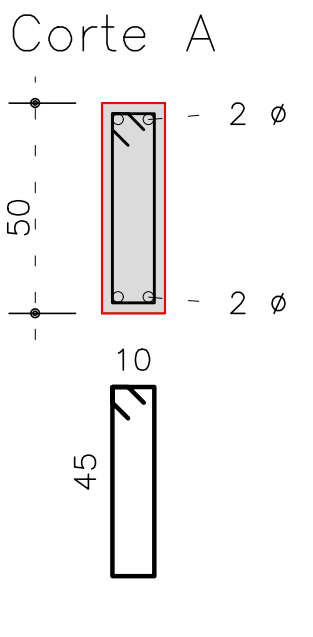
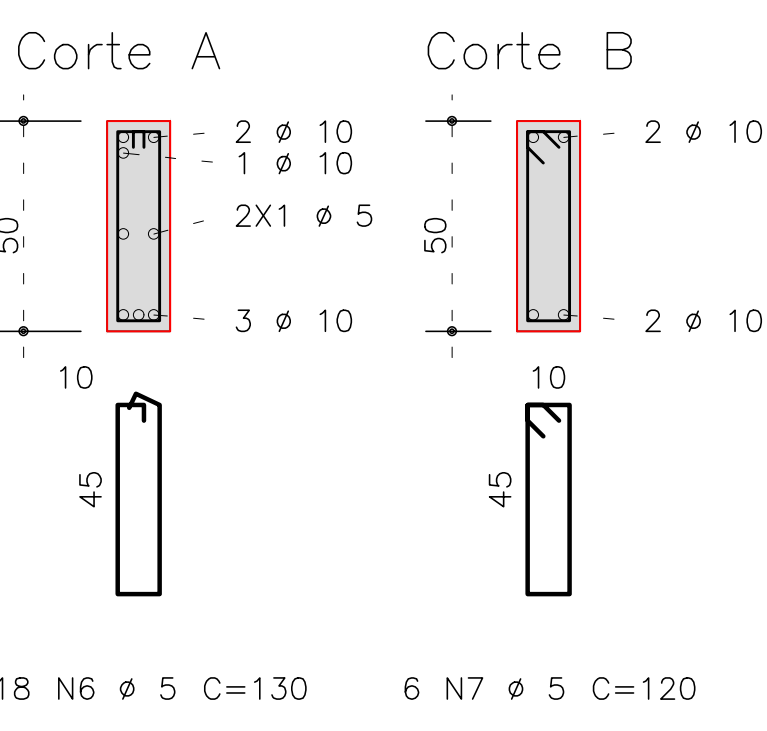
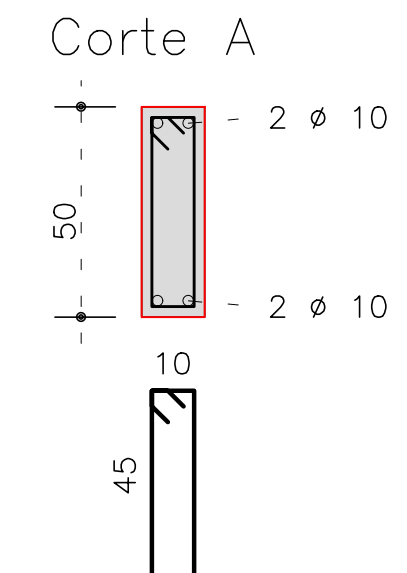
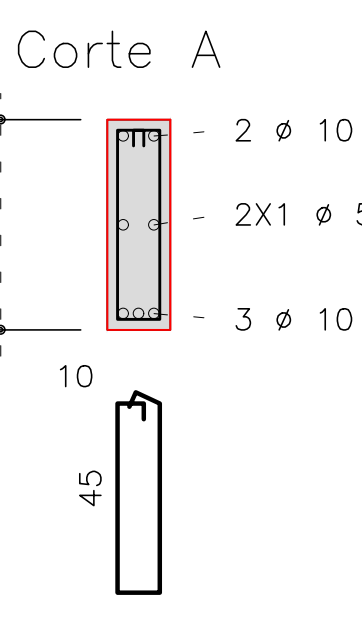
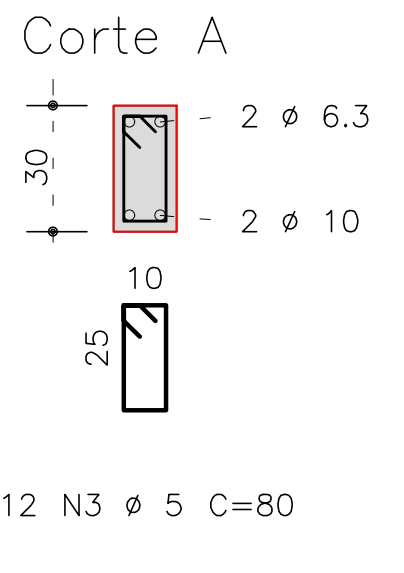
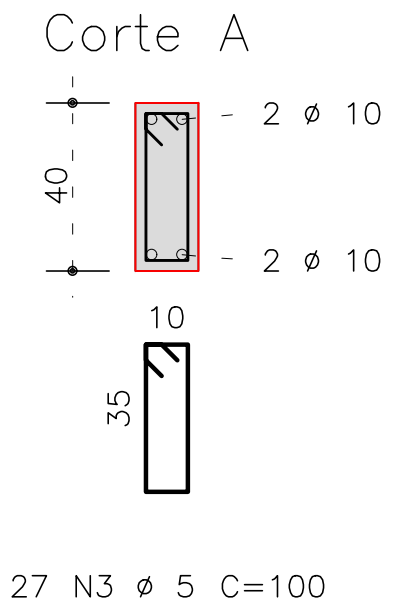


AÇO		POS	BIT (mm)	QUANT	COMPRIMENTO		
					UNIT (cm)	TOTAL (cm)	
V100		50A	1	10	2	668	1336
		50A	2	10	2	650	1300
		50A	3	5	27	100	2700
V101		50A	1	6,3	2	230	460
		50A	2	10	2	215	430
		50A	3	5	12	80	960
V102		50A	1	10	2	552	1104
		50A	2	10	3	500	1500
		50A	3	5	2	470	940
V103		50A	4	5	18	130	2340
		50A	1	10	2	705	1410
		50A	2	10	1	235	235
V104		50A	3	10	2	650	1300
		50A	4	5	1	375	375
		50A	5	5	2	482	964
		50A	6	5	18	130	2340
		50A	7	5	6	120	720
		50A	1	10	2	552	1104
V105		50A	2	10	2	500	1000
		50A	3	5	18	120	2160
		50A	1	10	2	705	1410
V106		50A	2	10	2	650	1300
		50A	3	5	22	120	2640
		50A	1	10	2	552	1104
V107		50A	2	10	2	500	1000
		50A	3	5	18	120	2160
		50A	1	10	2	668	1336
V108		50A	2	10	2	650	1300
		50A	3	5	27	100	2700
		50A	1	10	2	722	1444
V109		50A	2	10	2	880	1760
		50A	3	10	2	419	838
		50A	4	10	1	235	235
		50A	5	10	2	1085	2170
		50A	6	10	1	410	410
		50A	7	10	2	565	1130
		50A	8	10	1	425	425
		50A	9	5	2	544	1088
		50A	10	5	2	539	1078
		50A	11	5	2	543	1086
		50A	12	5	65	130	8450
	V110		50A	1	10	2	390
		50A	2	12,5	3	475	1425
		50A	3	10	2	873	1746
		50A	4	10	1	235	235
		50A	5	10	2	1085	2170
		50A	6	10	1	410	410
		50A	7	10	2	565	1130
		50A	8	10	1	425	425
		50A	9	5	2	544	1088
		50A	10	5	2	539	1078
		50A	11	5	2	543	1086
		50A	12	5	76	130	9880
V110		50A	1	10	2	430	860
		50A	2	10	2	415	830
		50A	3	5	24	80	1920



- | | | | |
|---|--|--|--|
| \\SRF1\pam\VEVISÃO - Espaço Educativo - Urbano 0406 Salas\PROJETO ATUALIZADO 2005\pam-dm\FUNDESCOLA.jpg | | | |
| ESPAÇO EDUCATIVO URBANO II - 04 E 06 SALAS DE AULA | | | |
| ENDEREÇO: | | DIVERSOS | |
| PROPRIETÁRIO: | | FUNDO DE FORTALECIMENTO PARA A ESCOLA - FUNDESCOLA | |
| AUTORES DO PROJETO : | | MANOEL FERNANDO PEREIRA SANTOS | |
| RESPONSÁVEL TÉCNICO: | | | |
| <div> <div>PROPRIETÁRIO</div> <div>AUTOR DO PROJETO</div> <div>RESP. TÉCNICO</div> </div> | | | |
| DLFO | | CREA | |
| <div>EST</div> | | <div> <div>PROJETO ESTRUTURAL</div> <div> PRÉDIO ADMINISTRATIVO
 ARMAÇÃO E VIGAS
 V100 / V101 / V102 / V103 / V104
 V105 / V106 / V107 / V108 / V109
 V110 </div> </div> | |
| REVISÃO: | | FOLHA | |
| 01-2006 | | 03 | |
| DATA : | | ESCALA : | |
| ABRIL/2006 | | INDICADA | |
| CONCRETO | | fck = 20 MPa | |
| VISTO: | | | |